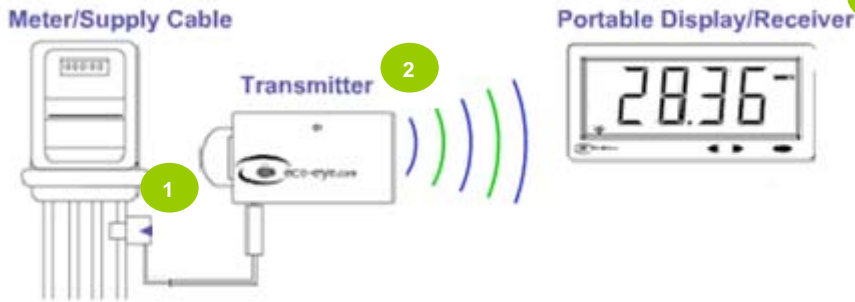


A/ Installation




- 1 Clip the Sensor onto the live cable you want to monitor. The recommended point is the mains live wire on the distribution board or the main meter.
- 2 Remove the LED Cable Tester and plug the Sensor into any of the 3 sockets on the Transmitter and insert 2x AA batteries. Double sided tape is provided so you can stick the Transmitter onto the wall. (The Transmitter can take 3 CT sensors for 3 phase supply)
- 3 Insert 2x AA batteries in the Display Unit and set the time. The Display Unit will immediately display the current kW reading.

B/ Programming

Your Eco-Eye has already been set to the local South African default settings as described in the table. You will need to set the time and specific electricity tariff.

To programme your Eco-Eye hold the green button down for a few seconds and this will take you into set up mode. Use the blue < and > buttons to select the various programming options and to enter the values. Press the green button to set.

The available programme options are:

Option	Function	Local Default	Note
000	Exit		Select 000 to exit programming mode
001	Time		Time is used for historical data recordings
002	Tariff	R0.733	Check your utility bill and enter your relevant tariff
003	Voltage	240v	In RSA voltage ranges from 220v to 240v
004	CO ²	1KgCO ²	In RSA we emit 1KgCO ² per kW Hour
005	Currency Symbol		In RSA we use the 'Hand with Notes' symbol to illustrate cost. £, \$ and € symbols are also available.
006	Display Screens	All	Use this option to switch the various screen displays on or off
007	Channel	2	Should there be interference from another Eco-Eye in range, use this option to manually configure the transmitter and display channel's
008	Dual Tariff	Off	Use this option to enter an off peak tariff if applicable
009	Sequential Mode	Off	Use this option if you want the various screen displays to rotate every 4 seconds
010	Clear Memory		Use this option to clear the historical data. Hold one of the blue buttons down and press the green button until ---- is displayed.
011	Temperature	°C	Use this option to adjust temperature display

C/ Using your Eco-Eye

Real-Time Usage Information

Press the green button to move through the real time information which is based on the current kW usage. The options are:

- 1/ Current usage in kW
- 2/ Projected spend per hour
- 3/ Projected spend per day
- 4/ Projected spend per week
- 5/ Projected spend per month
- 6/ Projected spend per year
- 7/ KG of CO² emitted per month
- 8/ Current time
- 9/ Current usage in Amps
- 10/ Ambient temperature

Switch off various lights and appliances and the real-time information will change. This is a great way to see how much money you will save per hour, week, month and year etc.

Historical Information

Your actual usage/cost is recorded in the history mode. Eco-Eye records 32 entries of data for kW, Hour, Day, Week and Months.

1/ Whilst in the real-time display mode press one of the blue arrow buttons to enter the relevant history mode. For example, when the unit is displaying real-time Cost per Day, press the blue button to view actual daily usage cost information for the last 32 days.

2/ Pressing the - blue arrow key illuminates a solid HISTORY icon and displays the relevant historical position i.e. position 01 press the - arrow key again and position 02 is displayed. Repeat to display all of the 32 historical entries.

3/ Pressing the green button at anytime will return the display to real-time information